

# THE LAST HEIR

"He inherited an empire. And every scar that came with it."



# LOGLINE

After inheriting his family's industrial empire, Emmitt Heed confronts buried trauma, generational betrayal, and a brutal power struggle that threatens to destroy the legacy his ancestors built. The Last Heir is a prestige drama that blurs the line between redemption and revenge—where legacy is earned through sacrifice.

A woman with long, wavy blonde hair is shown in profile, sitting in the driver's seat of a car. She is wearing a dark blue blazer over a light-colored collared shirt. The car's interior, including the side mirror and window frame, is visible. The lighting is soft and cinematic, with a yellowish tint. The background is dark and out of focus.

# TONE & AESTHETIC

In the vein of *Succession* and *Ozark*, the series embraces a moody, cinematic style that juxtaposes generational wealth with inner rot. Landscapes feel both expansive and claustrophobic. The music palette features haunting instrumentals by composers similar to Ramin Djawadi and Hans Zimmer. The dialogue is sharp, emotional, and unflinching.



# SERIES OVERVIEW

The Last Heir explores the modern and historical arcs of the Heed family, a Southern dynasty whose fortune was built on rubber, labor, and power. Told through parallel timelines, the series juxtaposes the rise of Elijah Heed in the early 1900s with the emotional downfall and attempted redemption of his grandson Emmitt Heed in the present day. The story delves into corporate warfare, familial loyalty, deep-seated trauma, and the price of survival in a world where legacy can be a curse.

A dark, moody photograph of a person's hands on a car's dashboard and steering wheel. The person is wearing a dark jacket with a red light on the sleeve. The dashboard features a digital display showing '12:00' and '100%'. The steering wheel is visible in the foreground. The overall atmosphere is mysterious and cinematic.

# CHARACTERS

# EMMITT HEED

Emmitt Heed is the reluctant heir to a Southern industrial empire built on legacy, loyalty, and unspoken violence. Privileged by birth, battered by disaster, he lost his mother and grandfather in a plane crash & even served time in prison.

Upon return, he comes home to a broken family and a decaying company, not seeking forgiveness but accountability. Haunted by past betrayals and held together by the people he cares about, Emmitt is a man of principle in a world that rewards betrayal. With an estranged son, a loyal ex-wife, and enemies closing in, he must decide whether to protect the family name—or finally bury it.

## Wishlist>



LEIV SCHREIBER



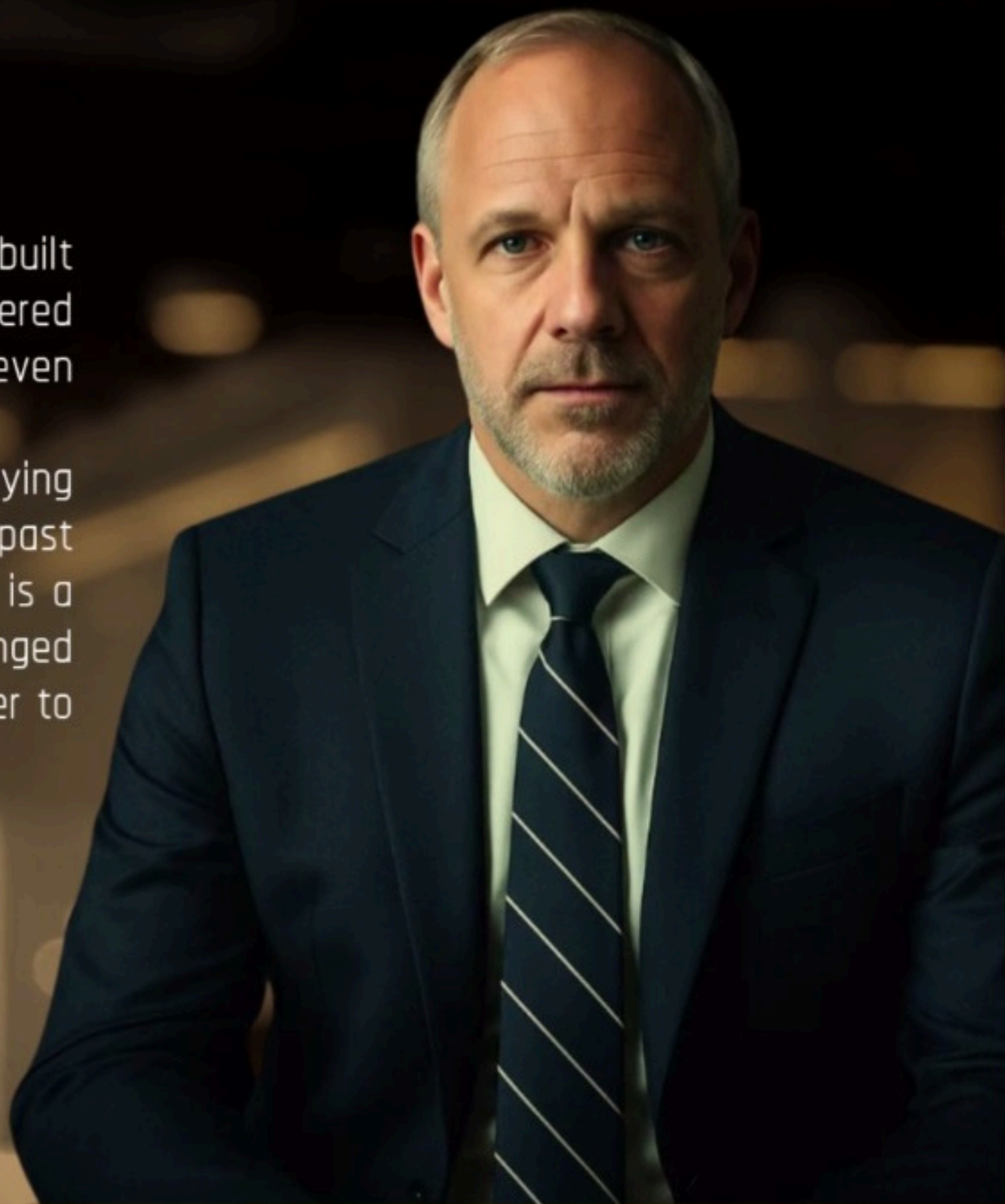
JON HAMM



BEN MENDELSON



KURT WEICHERT





# BIRDIE NASH HEED

Born into the Heed Industries legacy, Birdie Nash Heed never craved spotlight—only purpose. Raised with privilege but grounded in values by her mother Dolly, she grew up alongside Emmitt and Grayson, the two boys who would later divide the family. Marrying Emmitt felt destined, but their marriage unraveled under the weight of grief, betrayal, and corporate warfare. Still, Birdie raised their son Reed with grace and protects her grandchildren fiercely.

Though no longer part of the family empire, Birdie remains its emotional anchor. When Jo Jo comes to her heartbroken over Emmitt's suffering, Birdie doesn't hesitate—she steps in, not as a wife, but as his his rescuer.

## Wishlist>



AMY ADAMS



LAURA LINNEY



DIANE LANE



NAOMI WATTS

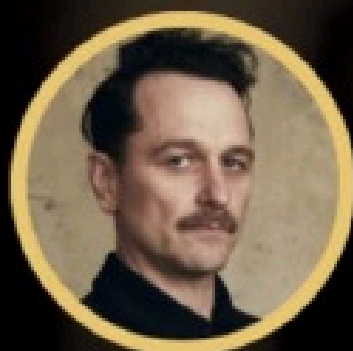
# GRAYSON NASH

Grayson Nash was Emmitt's childhood best friend—closer than a brother, bonded by shared loss and dreams of restoring their family legacy. The son of Dolly Nash and husband to Scarlett Heed, Grayson became a key strategist at Heed Industries, working alongside Emmitt at the company's peak. But Scarlett's sudden death shattered everything. Grayson blamed Emmitt for both the crash and the secrets surrounding it, turning their brotherhood into rivalry. He led a boardroom coup during Emmitt's trial, seizing control of the company—but his leadership lacked the soul Emmitt brought. As the truth behind the family's unraveling surfaced, Grayson spiraled into emotional and financial collapse.

## Wishlist>



KYLE CHANDLER



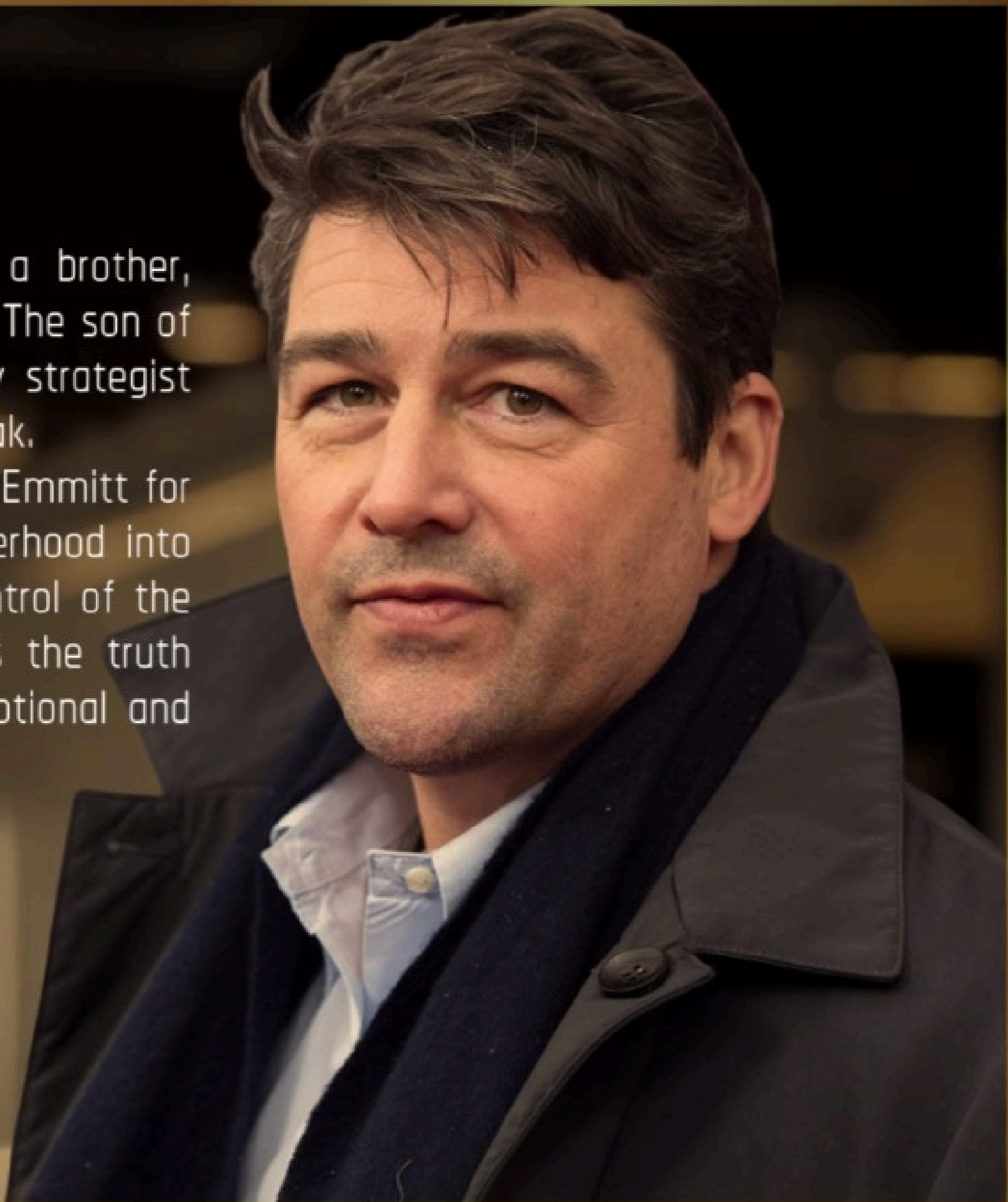
MATTHEW RHYS



JON HAMM



ERIC BANA





# SCARLETT HEED NASH

Scarlett Heed Nash, daughter of Blanche and Emmitt's stepsister. She married Grayson, and had two children—but her battle with bipolar disorder remained a closely guarded secret. During a manic episode, she died in a car crash while Emmitt was driving, and he concealed the truth to protect her dignity. Grayson, unaware of her condition, blamed Emmitt—shattering their bond and the family's foundation.

Scarlett was adored yet unknowable—capable of lighting up a room or vanishing into despair. Her death triggered Emmitt's downfall, Grayson's grief, and the unraveling of their legacy. To Emmitt, she's the one he failed to save. To others, she was brilliance wrapped in danger.

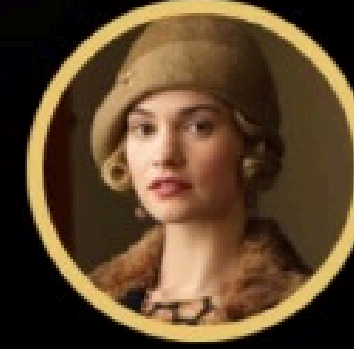
**Wishlist>**



FLORENCE PUGH



JODIE COMER



LILY JAMES



RILEY KEOUGH



# COLONEL JONATHAN HEED

Colonel Jonathan Heed, a decorated Vietnam War hero, returned home with medals on his chest and grief in soul. While recovering from battle wounds, his wife, father, and brother-in-law died in a plane crash en route to see him—a loss he never spoke of. Back in Fort Myers, he took over Heed Industries and raised Emmitt and Scarlett with discipline & devotion. Haunted but resolute, Jonathan ruled through silence, sacrifice, and calculated decisions made behind closed doors. He wasn't cruel—just a man who believed legacy came before comfort. To Emmitt, he was both protector & warning; the standard to live up to and the cost of carrying it.


## Wishlist>



ED HARRIS



SAM ELLIOTT



**LEGACY VS. IDENTITY**

Can you inherit greatness without inheriting guilt?

**FAMILY LOYALTY**

How far will you go to protect blood—especially when it betrays you?

**REDEMPTION**

Is healing possible after years of silence and complicity?

**SURVIVAL**

When the empire falls, who's left to clean up the ruins?

# THEMES

# TONAL & VISUAL COMPS



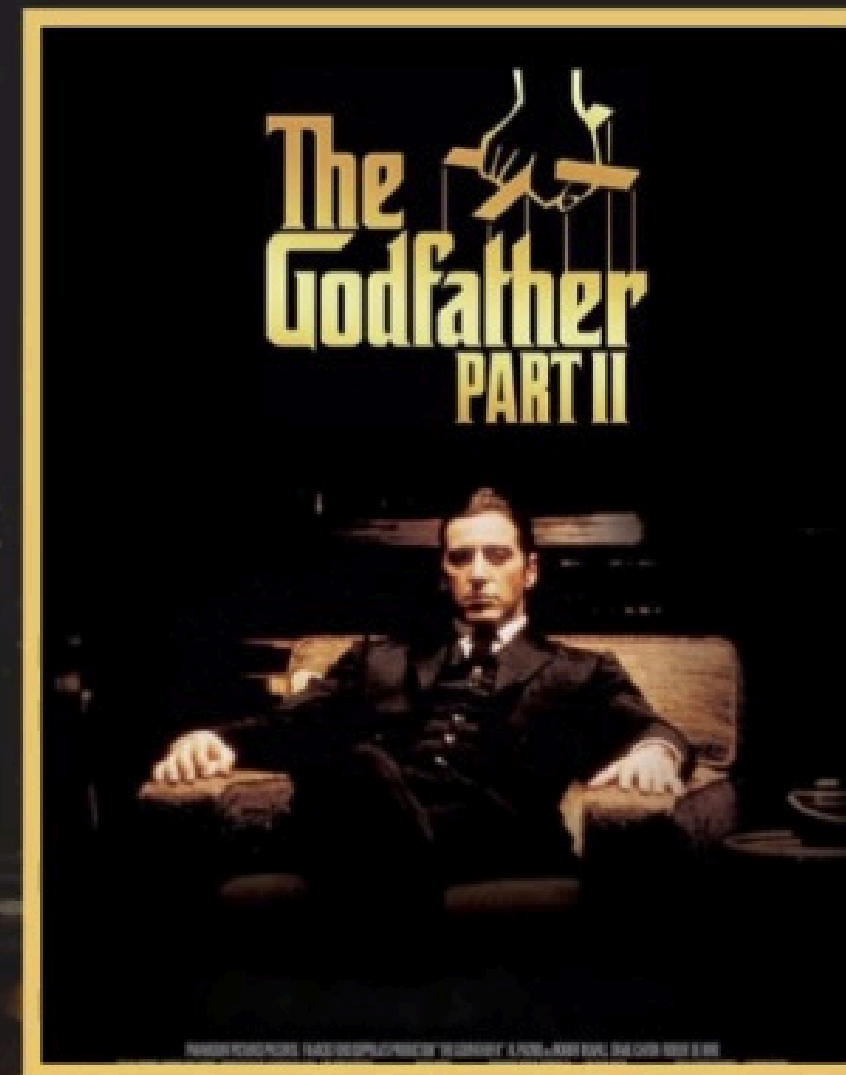
## SUCCESSION

For boardroom power dynamics, generational tension, and dry verbal warfare.



## OZARK

For its unraveling of criminal enterprise, family chaos, and regional specificity.



## GODFATHER PART II

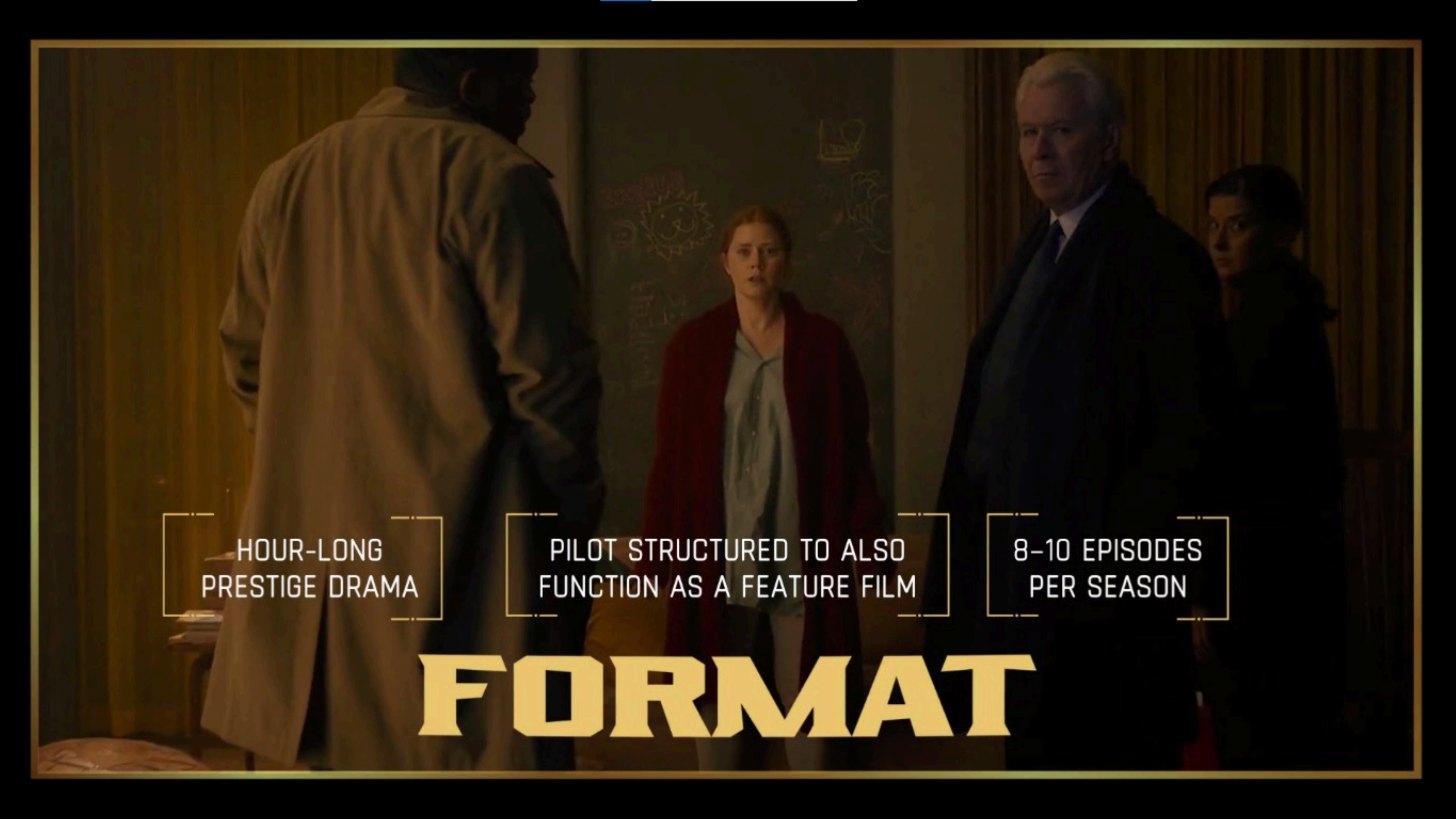
For historical echoes, dark legacy, and cross-generational trauma.

# WHY NOW?

The Last Heir speaks to a generation inheriting not only wealth or status—but pain, silence, and consequences. In a world obsessed with legacy and power, the show asks: What's it worth if it costs you everything?

This series doesn't glamorize dynasties—it dissects them. It offers no clean heroes, only broken people trying to do better. Or survive.





HOUR-LONG  
PRESTIGE DRAMA

PILOT STRUCTURED TO ALSO  
FUNCTION AS A FEATURE FILM

8-10 EPISODES  
PER SEASON

# FORMAT



**EPISODES**

## PILOT EPISODE

After years in prison for a betrayal he didn't commit, Emmitt Heed returns to a shattered legacy—only to uncover deeper family secrets that threaten to destroy what's left.

## THE BREATH AFTER

As Emmitt recovers in secret, a ruthless hedge fund predator launches a silent war on Heed Industries—while the real threat festers within its walls.

## GRAYSONS BURDEN

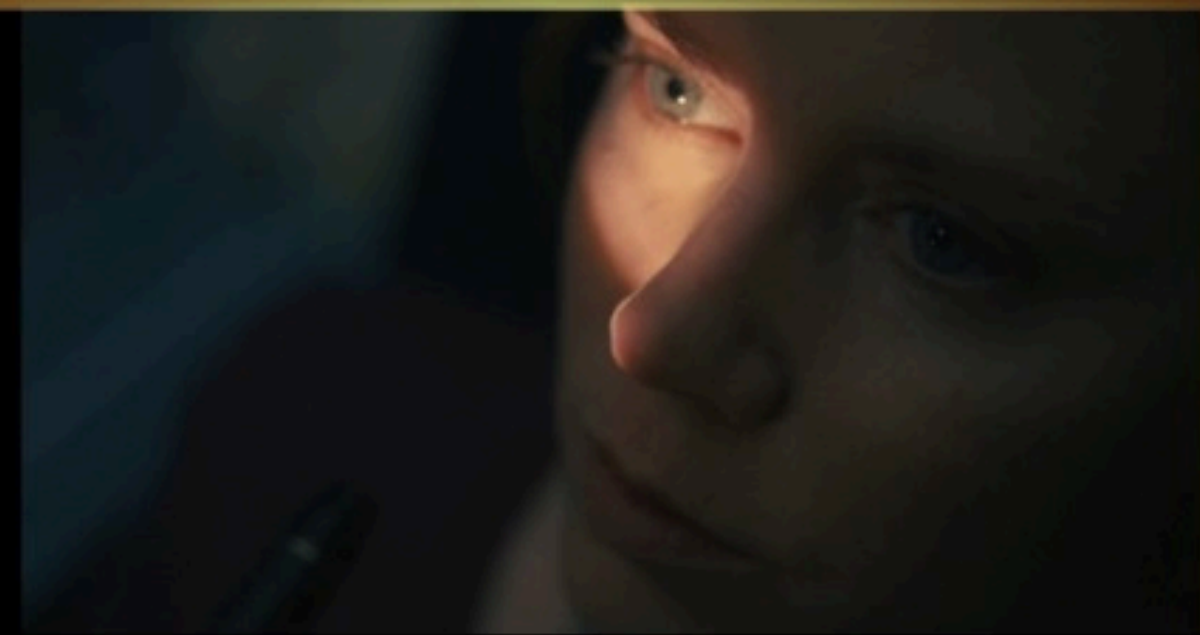
With Emmitt sidelined, Grayson tries to hold the company together. But after Wyatt is murdered by Kane's men, Grayson is left without his most competent legal advisor—and his board begins to fracture.

## THE JUDAS CLAUSE

A longtime board member flips—feeding intel to Kane in exchange for leverage and promises. As sabotage escalates, Grayson begins to suspect someone close is orchestrating the collapse.

## ASH AND BONE

Dolly's journals reveal long-buried family secrets that change everything Emmitt thought he knew. Junior moves in with Emmitt, and their bond begins to form. Emmitt, sensing a war coming, asks Ralphie to quietly gather the old henchmen.



## THE DEVIL YOU KNEW

The henchmen reunite—older, scarred, and reluctant. But they still owe Emmitt. With Kane now targeting Birdie's charity and moving on Reed's assets, the old guard agrees: this can't be ignored.

## BLOOD PROXY

Kane's next move is ruthless—he goes after the remaining loyalists one by one. Junior makes a bold public declaration, claiming the Heed name and legacy. It turns heads—and puts him in danger.

## REHAB ENDS, WAR BEGINS

Emmitt returns—limping, scarred, and more focused than ever. He storms into the boardroom and calls out the Judas in their midst. A quiet war goes loud.

## THE FIRE IN THE WALLS

Grayson, Emmitt, and the henchmen orchestrate a final counterstrike. Betrayals are revealed. A warehouse burns. Kane's empire fractures—but victory comes at a steep cost.



A photograph of a train at a station at night. The train is silver and has its headlights on. The station platform is visible on the right, with a street lamp. The sky is dark blue. In the bottom left corner, there is a yellow-bordered box containing contact information.

# CONTACT

Weichert Media

✉ [kurt@weichertmedia.com](mailto:kurt@weichertmedia.com)

☎ (239) 810-9356