




AUNT DEE DEE

A DARK COMEDY



LOGLINE



A delusional, narcissistic, wine-soaked, Botox-stuffed tyrant wreaks havoc on her family, friends, and anyone within earshot as she spirals through petty rivalries, imagined slights, and a string of humiliatingly avoidable disasters—convinced the whole time that she’s the star of a life everyone envies.

SYNOPSIS

Aunt Dee Dee chronicles the uncensored misadventures of a narcissistic, delusional woman crashing through suburban living wine-soaked and with a grudge against reality. From nobodies in a mid-level suburb, Dee Dee hangs on the periphery of affluence following her husband's serendipitous real estate flip, leaning on Botox, Chardonnay, and apocryphal social status to buttress a failing sense of significance. Her existence is a circus of trivial feuds, out-of-control brunches, and spectacular breakdowns — from destroying her niece's wedding to accusing quiet brother-in-law Dennis of silence-seduction. Induced by three bottles of wine a day and a phone full of crazed messages, Dee Dee turns every ordinary event into a platform of self-destructive chaos.

Through the series, Dee Dee fights restraining orders, humiliating interventions, viral video scandals, and a failed stint at sobriety — all while convinced she's the misunderstood icon of her block. Her friends are transactional, her foes are figments, and her sense of self-worth is supported by delusion and knockoff designer duds. But underneath every shattered wine glass and brunch blow-up lies a portrait of unbridled ego and self-annihilation masquerading as confidence. Aunt Dee Dee doesn't evolve or grow — she only burns more intensely as the chaos surrounding her ignites, one scented candle and failed text message at a time.

THEME & STYLE



THEME: A satirical examination of self-destruction, delusion, and narcissism disguised as confidence, against the settings of nouveau-riche absurdity.



TOPE: Dark, dry, and biting combining emotional mayhem with deadpan humor and cringe-worthy absurdity.



VISUALS: A tacky combination of suburban gloss and accidental horror, with velvet couches, gaudy gold fixtures, and wine spots staging Dee Dee's world apart.



NARRATIVE STYLE: Quick-witted and bracingly satirical, fueled by visual jokes, cringe moments, and badinage that cuts as cruelly as it ridicules.



MAIN

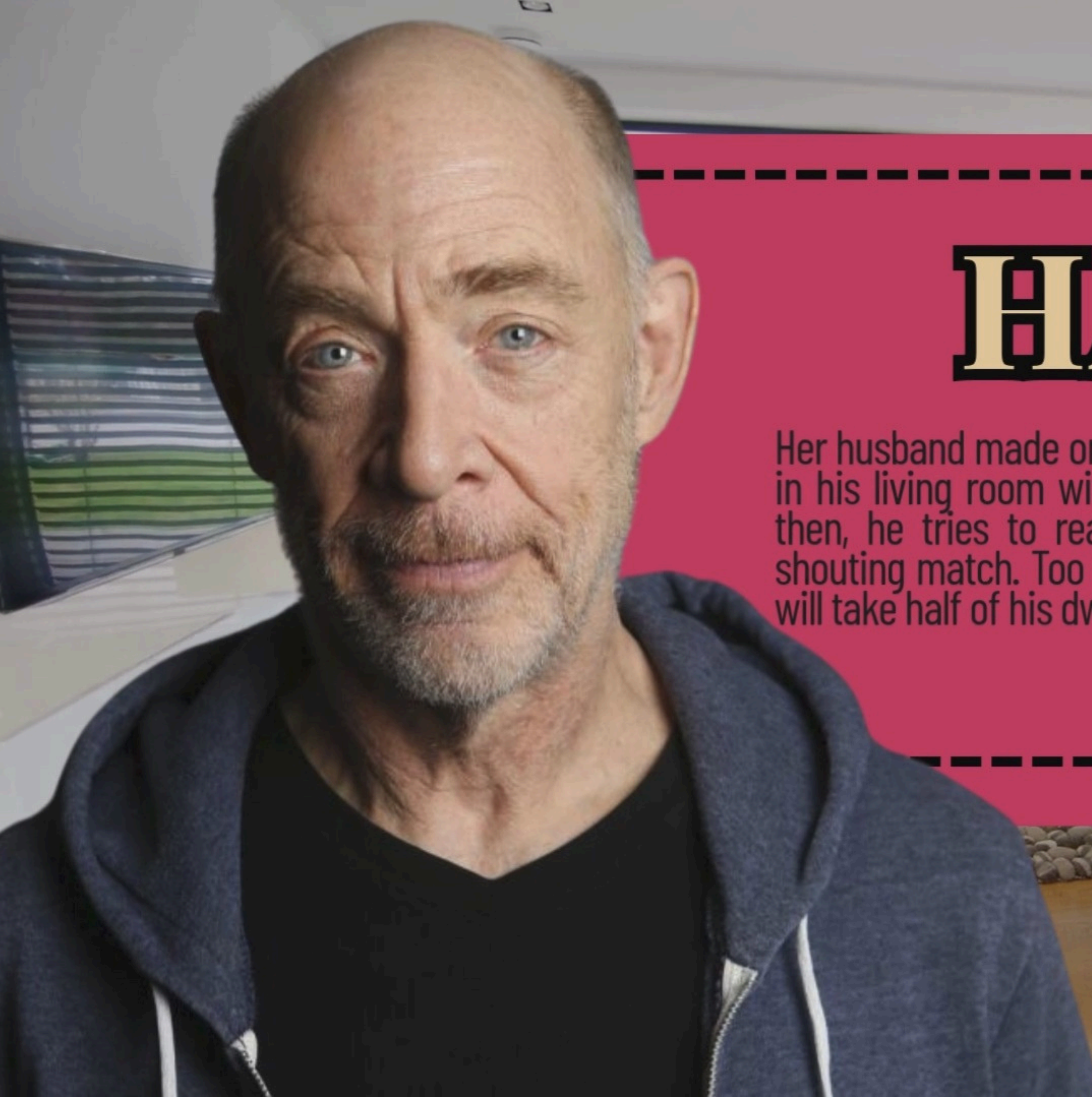


CHARACTERS

AUNT DEE DEE

Botoxed, boozed, and bitter. Our anti-heroine. Somewhere between a wrecking ball and a wine glass with legs. Has a false sense of sophistication, a vocabulary of \$1 words used incorrectly, and a decaying moral compass. Dee Dee thinks she's fabulous, feared, and followed by the upper crust. In truth, she's a suburban menace with two DUIs, multiple restraining orders from relatives, and a track record of weaponizing brunch. She has no filter, no shame, and no clue.



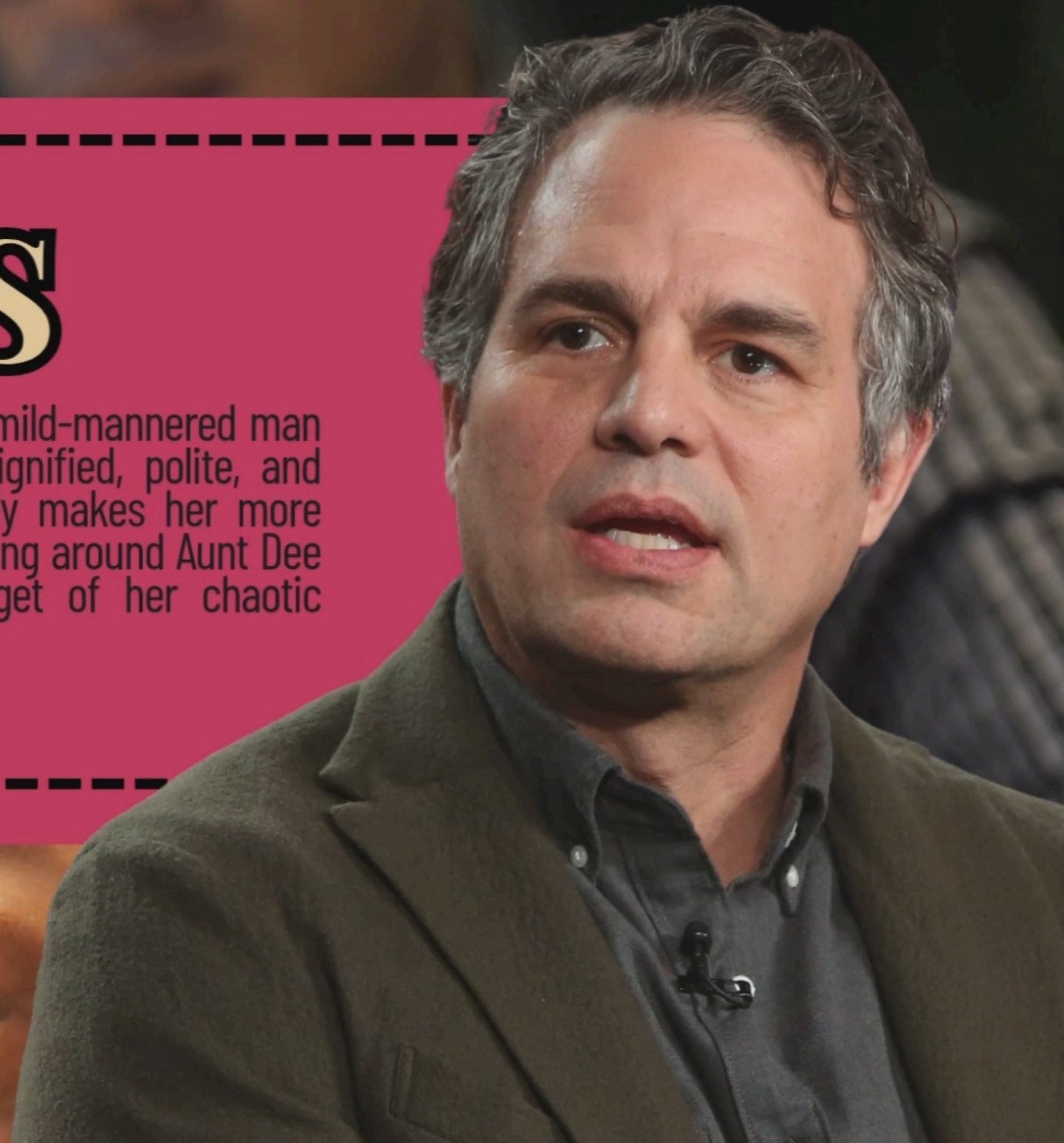


HAROLD

Her husband made one lucky real estate flip in the '90s and now hides in his living room with noise-canceling headphones. Every now and then, he tries to reason with Dee Dee but it always turns into a shouting match. Too terrified to divorce her because he's scared she will take half of his dwindling money.

DENNIS

Her brother-in-law and current obsession. A normal, mild-mannered man who Dee Dee has decided is her nemesis. He's dignified, polite, and completely uninterested in her drama — which only makes her more obsessed. A normal guy who made the mistake of being around Aunt Dee Dee for too long. Stoic, unbothered, and the target of her chaotic obsession.





MAGGIE

One of Dee Dee's normal sisters. More grounded yet still ensnared in Dee Dee's dysfunction. Her son is getting married, which triggers Dee Dee's worst instincts.





TAWNI

Dee Dee's hairdresser, "best friend," and spiritual advisor — mostly for the tip money and podcast content. Tawni secretly documents every ridiculous thing Dee Dee says for her podcast "Bangs and Brutes."



JULIO

The landscaper. Polite, kind, and totally indifferent to Dee Dee's grandiosity. Dee Dee thinks he worships her; he does not. He avoids eye contact at all costs. His dogs growl when she's near.

SEASON ONE OVERVIEW

Each episode features a Dee Dee disaster, a different "enemy," and escalating fallout.

EP 1 - "TEXTUAL HEALING"

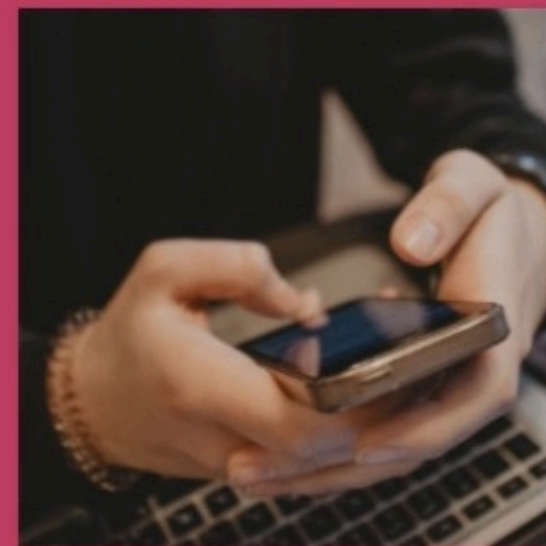
Dee Dee receives a letter from Dennis asking her to stop texting him. She escalates the situation with a barrage of deranged messages and crashes his daughter's engagement brunch.

EP 2 - "BRUNCH BITCH"

Dee Dee hosts a brunch for "important women" but forgets to invite anyone with actual social standing. She accuses her hairdresser of sabotage and fires the caterer mid-meal.

EP 3 - "PLASTIC FANTASTIC"

After a Botox mishap, Dee Dee tries to sue her surgeon and ends up going viral for screaming in a med spa lobby. She decides to become a lifestyle influencer.



SEASON ONE OVERVIEW



Ep 4 - "The Intervention"

The family stages an intervention. Dee Dee misinterprets it as a surprise birthday party and becomes enraged when she does not see any gifts for her.

Ep 5 - "Home Wrecker"

Dee Dee's landscaper quits again after she accuses Julio of stealing her wine. Later Dee Dee tries to seduce a teenage pool cleaner to make her husband jealous.

Ep 6 - "Sister Act"

Dee Dee tries to upstage her sister Maggie at a charity gala, only to be caught shoplifting earrings from the silent auction.

Ep 7 - "The Apology Tour"

Forced into a public apology tour after an ugly viral video, Dee Dee leans into performative regret and hires a spiritual coach to rebrand her as "the drunk Oprah."

SEASON ONE OVERVIEW

Ep 8 - "Wine Not?"

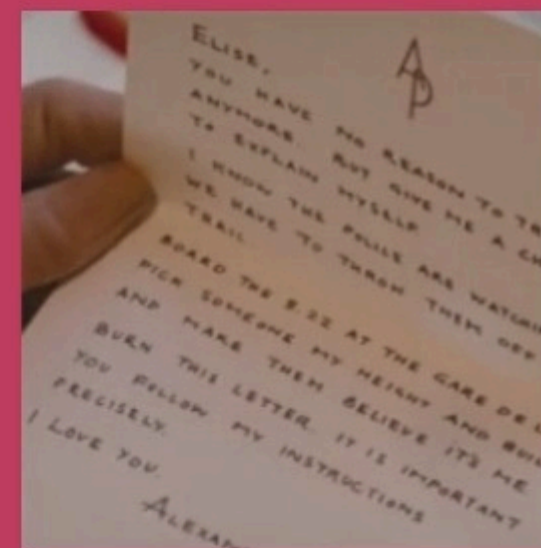
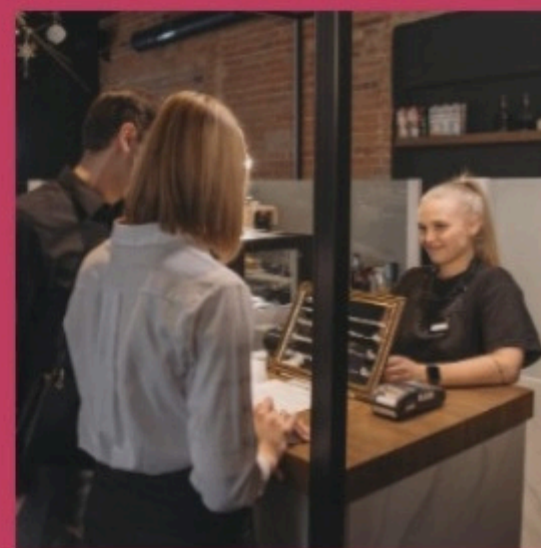
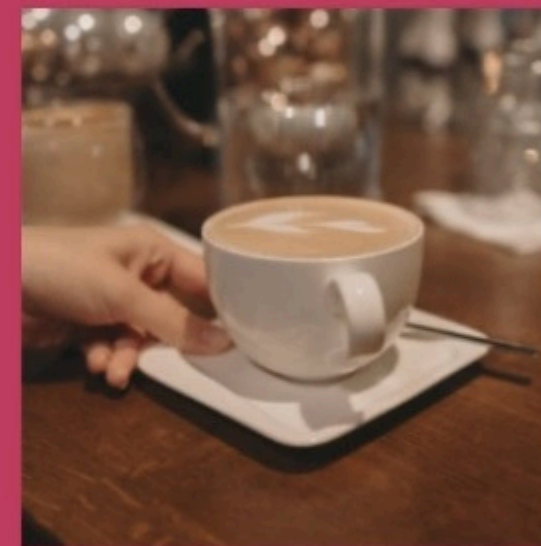
Dee Dee vows to give up drinking. The next 24 hours are a fever dream of hallucinations, paranoia, and karaoke threats. Two months she accepts a two month sober award even though she only quit for two days.

Ep 9 - "Dennis's Restraining Order"

Dennis finally files an official restraining order. Dee Dee retaliates with an interpretive dance performance at his driveway.

Ep 10 - "Maid of Dishonor"

The wedding. Dee Dee hijacks the ceremony, claims the bride stole her "life path," and accidentally sets her own dress on fire with a scented candle.



SERIES ARC

Dee Dee begins as a delusional menace and ends as... an even more delusional menace. Her arc is less about growth and more about escalating collapse. The humor comes from watching the world bend — and eventually snap — under the weight of her self-created fantasy.



TARGET AUDIENCE

Aunt Dee Dee is for humans who love to indulge in dark humor, poisonous family relationships, and the tasty awkwardness of seeing a trainwreck in pearls disintegrating in slow motion. It's for an audience that will appreciate biting, cringe-inducing comedy with base flaws so gargingly large they warp reality. If you enjoy seeing the emotionally ill use wine glasses as weapons, misunderstand interventions as surprise parties, or sabotage weddings in a frenzy of scented-candle anarchy — this is your show. The series takes a cathartic no-holds-barred peek at ego, denial, and self-destruction through a profoundly deluded anti-heroine in an era where brunch is war and every family group message is a battlefield. Ideal for viewers who can't get enough dysfunction, disaster, and just enough truth to make it all ring uncomfortably close to home.

VISUAL STYLE & COMPS



(chaotic energy, family dysfunction)



(dialogue and speed)



(ensemble absurdity)

Cinematography

- Single-cam, natural lighting with sharp, wide-angle comedic framing
- Close-ups on Dee Dee's delusional expressions and awkward silences
- Fast cuts, intercut text messages, security cam-style moments for her more unhinged behavior



CONTACT

Weichert Media

✉ kurt@weichertmedia.com

☎ (239) 810-9356